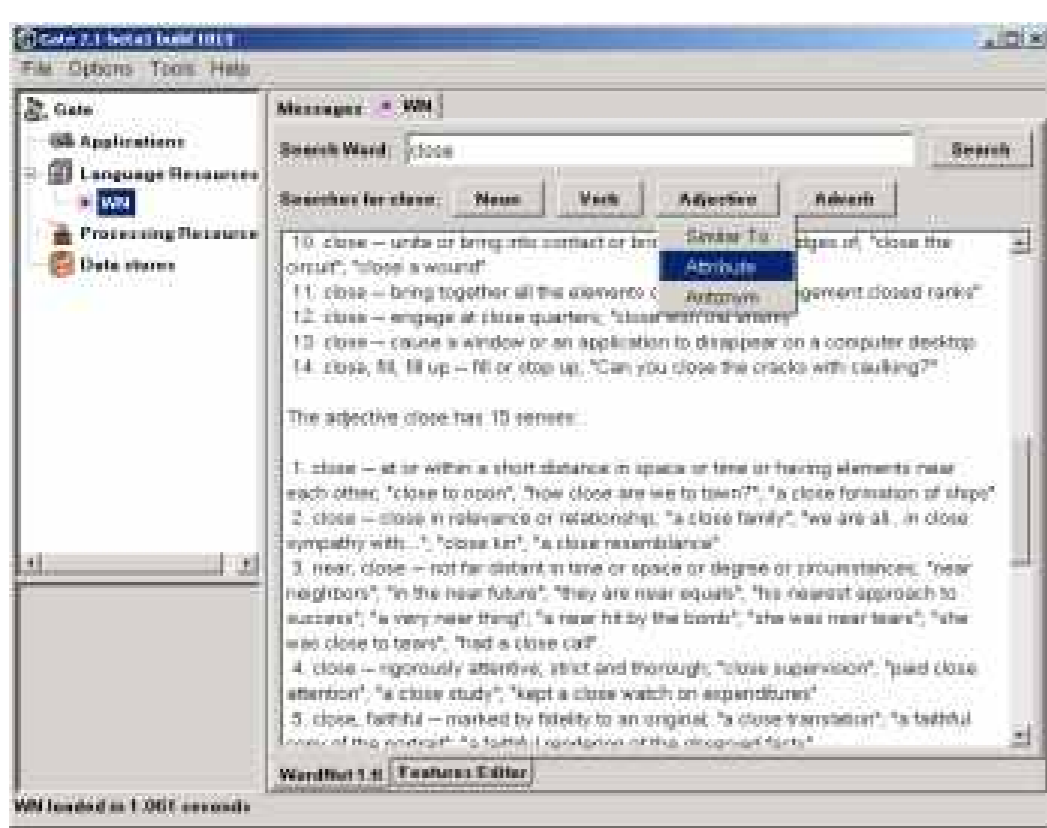
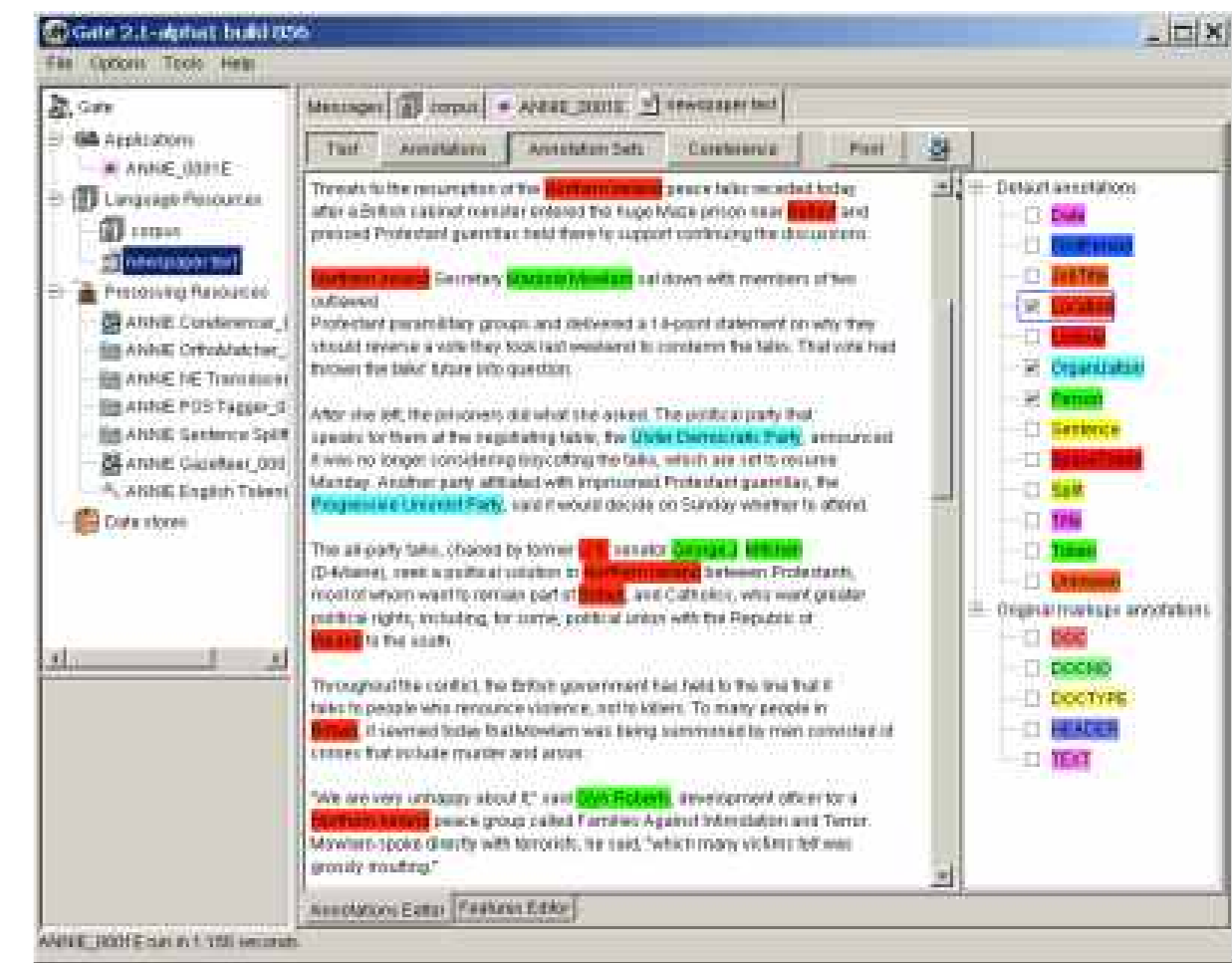


Wordnet



Information Extraction

- High Performance
- Robust across genres and formats
- Multilingual
- Portable

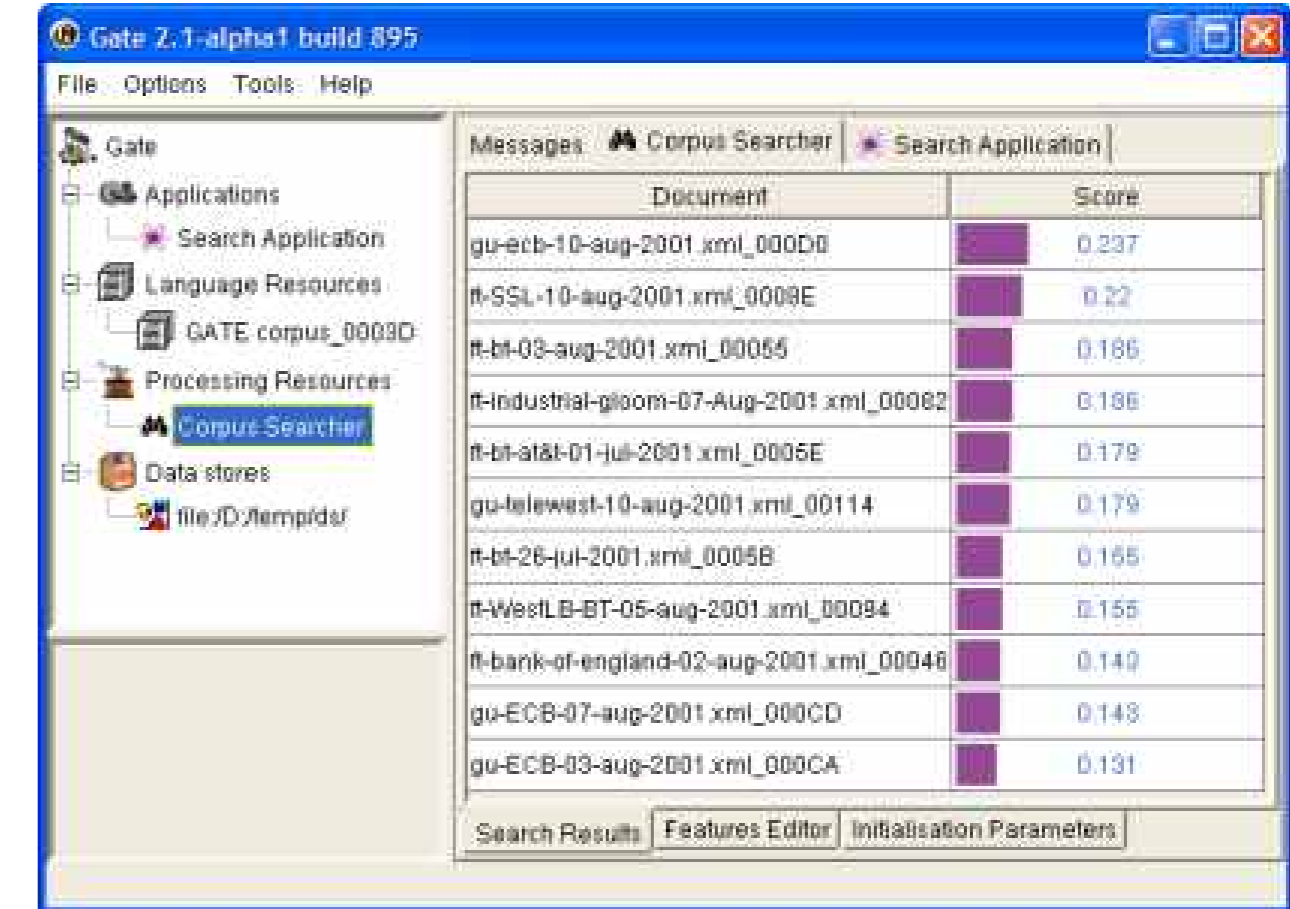


GATE
<http://gate.ac.uk>

Software Architecture for Language Engineering

- Open Source
- Stable
- Scalable
- Customisable
- Robust
- Reusable Components

Information Retrieval



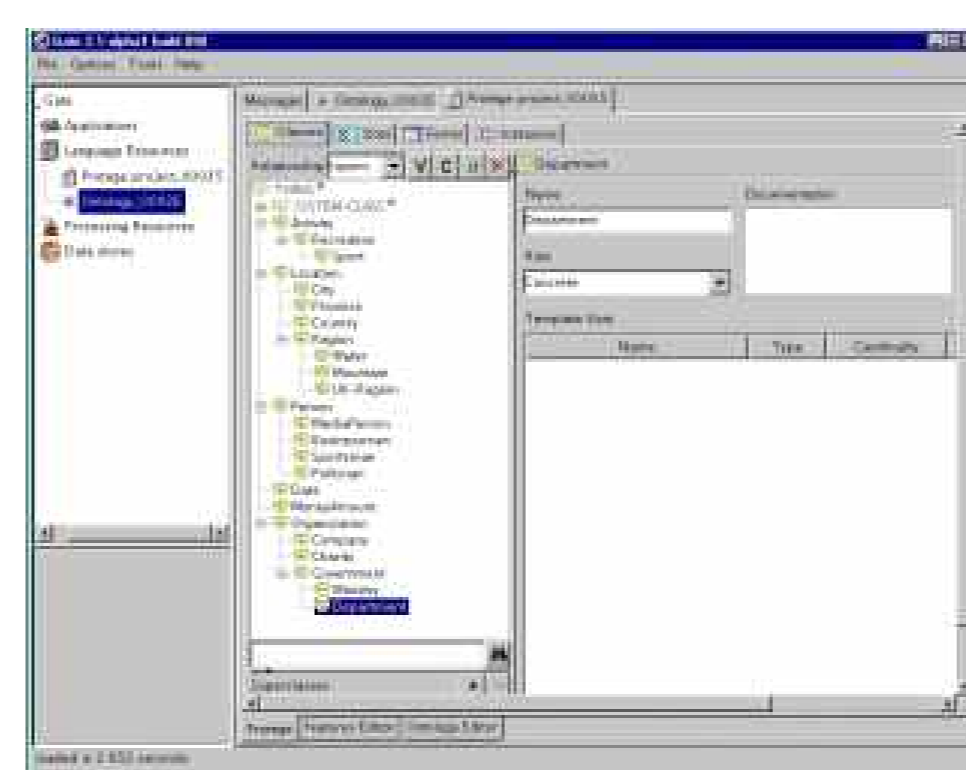
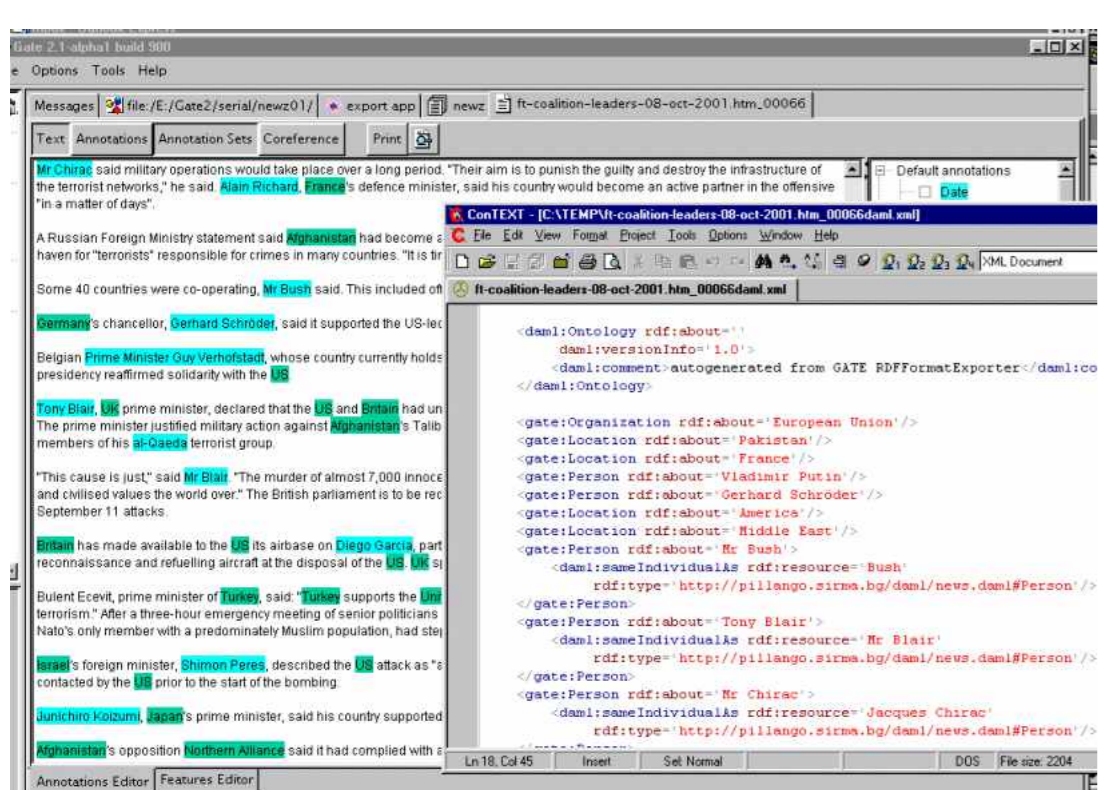
Full featured implementation based on Apache Lucene.

Multilinguality



The Semantic Web

- Ontologies management through Protégé integration.
- DAML+OIL support.

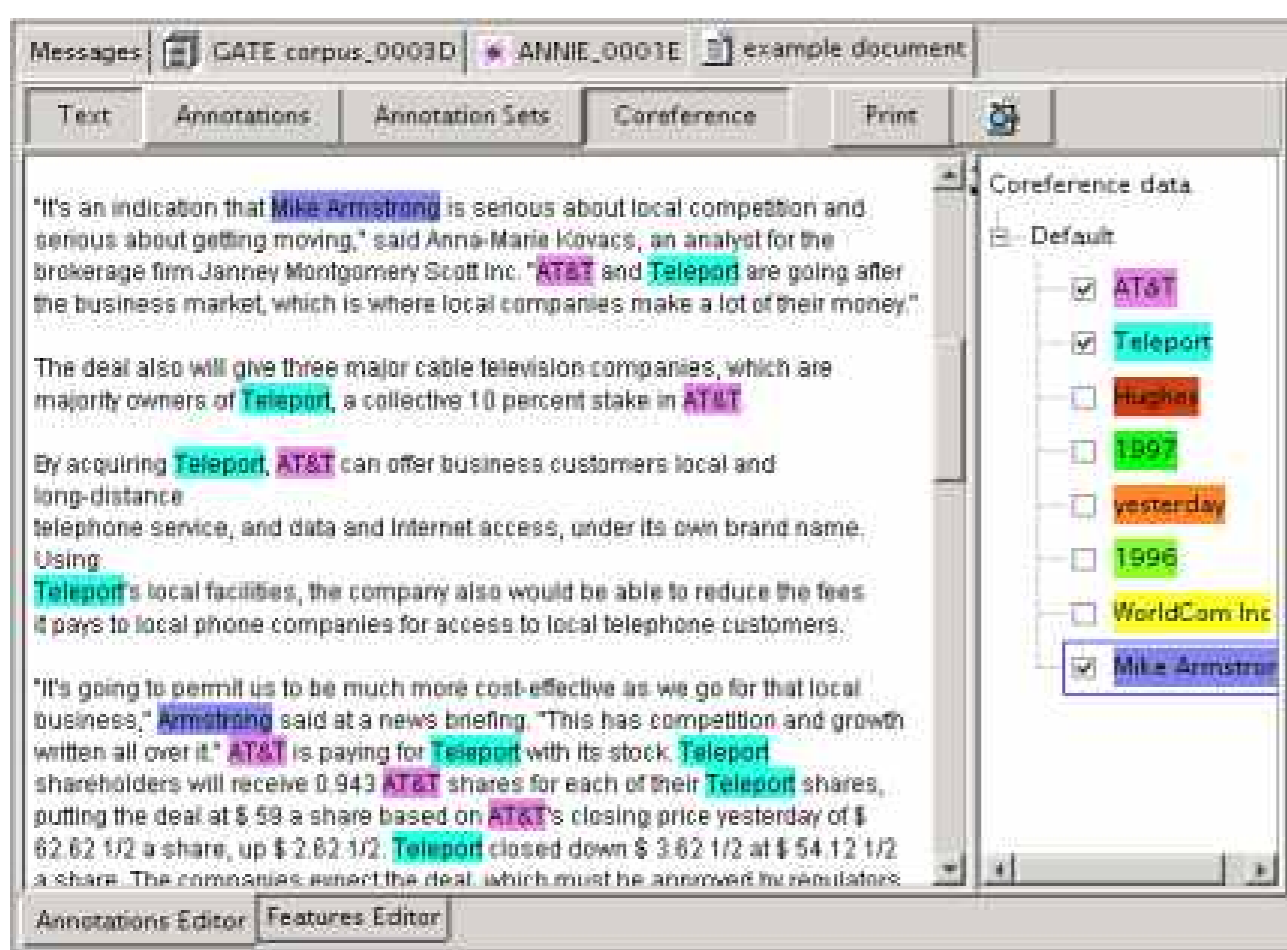


- 100% Java
- JDK 1.3/1.4
- XML, HTML, RTF, ...
- ORACLE
- PostgreSQL

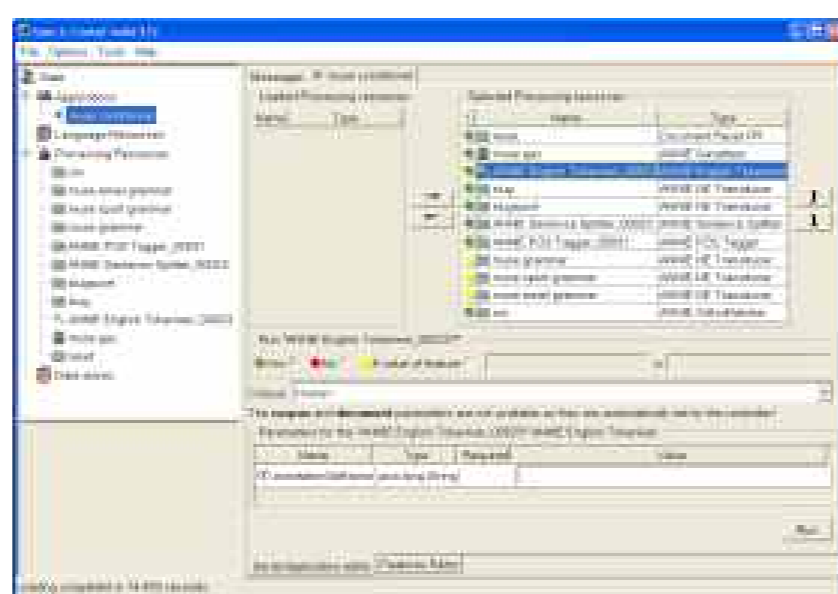
Commercial

- Used at:
- Reuters plc.
 - GlaxoSmithKline plc.
 - British Gas plc.
 - Master Foods NV
 - Merck KgAa

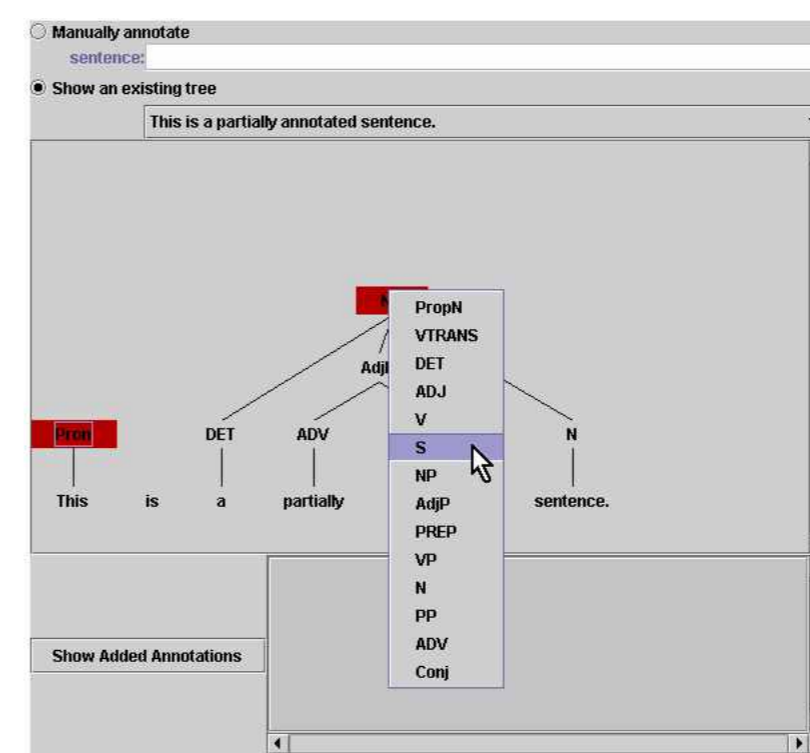
Advanced Graphical Interface



Coreference Viewer



Application Editor



Syntax Tree Editor

Ready-made components



Evaluation

String	KeyStart	KeyEnd	Key	String	ResponseStart	ResponseEnd	Response
England	2358	2365	England	England	2358	2365	
UK	258	260	UK	UK	258	260	
Hampshire	2638	2647					
Swanwick	2886	2894					
Europe	746	752	Europe	Europe	746	752	
Wales	2370	2375	Wales	Wales	2370	2375	
UK	2801	2803	UK	UK	2801	2803	
Swanwick	2628	2636					
UK	931	933	UK	UK	931	933	

Precision strict: 1.0000 Recall strict: 0.6667 F-Measure strict: 0.8000
 Precision average: 1.0000 Recall average: 0.6667 F-Measure average: 0.8000
 Precision lenient: 1.0000 Recall lenient: 0.6667 F-Measure lenient: 0.8000

Integrated tools for performance evaluation.

GATE has been funded by the EPSRC
<http://www.epsrc.ac.uk/>

- Repeatability
- Collaboration
- Reuse vs. Reinvention
- Quantitative evaluation

Research

- Used at:
- American National Corpus
 - IBM T.J.Watson Research Centre
 - University of Manchester - Multiflora
 - University of Southampton - ArtEquAkt
 - Middlesex University - summarisation for business models
 - SUNY, Albany - Q/A project HITIQA
 - Imperial College - summarisation